

Transforming Lives



Our ATT Magazine
Issue 2 | 29.01.26



A Welcome from **Our CEO**



It gives me great pleasure to introduce Issue 2 of Transforming Lives, our magazine that celebrates the extraordinary work taking place every day across Academy Transformation Trust.

Within these pages you will see the spirit of ATT in action: pupils achieving at the highest level, communities strengthened through partnership, and colleagues creating the conditions for young people to thrive. From sporting triumphs across our academies to national and international recognition, this issue is full of stories that show what is possible through dedication, discipline and belief.

You will also see how we are investing in the future and widening opportunity beyond the classroom. We share major estates improvement work at The Queen Elizabeth Academy, powerful community impact through ATT Further Education College's #InThisTogether life saving initiative, and the transformation of Cornerstone Theatre into a state of the art cultural hub that is already being recognised regionally.

This issue also shines a light on Transformational Education, our aligned approach to pedagogy, curriculum and understanding our learners. It is rooted in adaptive practice and in our shared commitment to ensure every pupil feels seen, supported, stretched, and equipped to succeed with confidence.

Our mission remains simple: to provide a transformational education that builds capable, competent, and confident young people. Thank you for your interest in our work, and for everything you do to help us continue transforming lives through education.

Mark McCourt

Chief Executive Officer
Academy Transformation Trust

Mildenhall College Academy & Sutton Community Academy

Suffolk & Nottinghamshire

Sporting Successes!

MCA's Year 9 team were crowned Suffolk County Champions at the U14 Suffolk Basketball Finals in December. With an impressive final score of 80-64, they played unbelievably well all day, constantly remaining in front of their competitors. The team are now through to the next round, where they will play against schools from the East of England early next year. Well done to all involved!



SCA is proud to celebrate student Fletcher Harrison who recently became a World Champion at the prestigious World Martial Arts Games in Oslo, Norway!

Fletcher returned to school to a hero's welcome, receiving a standing ovation from staff and fellow students. Lord-Lieutenant of Nottinghamshire Veronica Pickering even visited to personally congratulate him and see his gold medal up close. Fletcher, with five years of experience and training at Raven Defensive Arts, defeated two fellow Team GB opponents in the light continuous kickboxing category.

Principal Lewis Taylor said: "Our entire Academy community is incredibly proud of Fletcher. His success shows our students that anything is possible with dedication and hard work!"

December marked the final annual parade for the Westbourne Combined Cadet Force (CCF). As a signatory of the Armed Forces Covenant, ATT is extremely proud that Westbourne are the only CCF in Suffolk outside of independent schools.

This year, the first Aaron McClure Trophy was presented to their Contingent by Aaron's mother Lorraine McClure, and her partner Steven York, a Veteran Royal Anglian.



Aaron, a Westbourne alumnus, was tragically killed whilst serving in northern Helmand Province, Afghanistan, with the 1st Battalion, Royal Anglian Regiment. In lasting legacy to his memory, the academy will award this trophy to their most outstanding Cadet each year.

This year, the first ever recipient was Year 10 pupil L/Cpl Lexie Wilson. Congratulations to Lexie and all the other cadets who received awards and promotions at the parade.

What's Happening Across Our Trust...

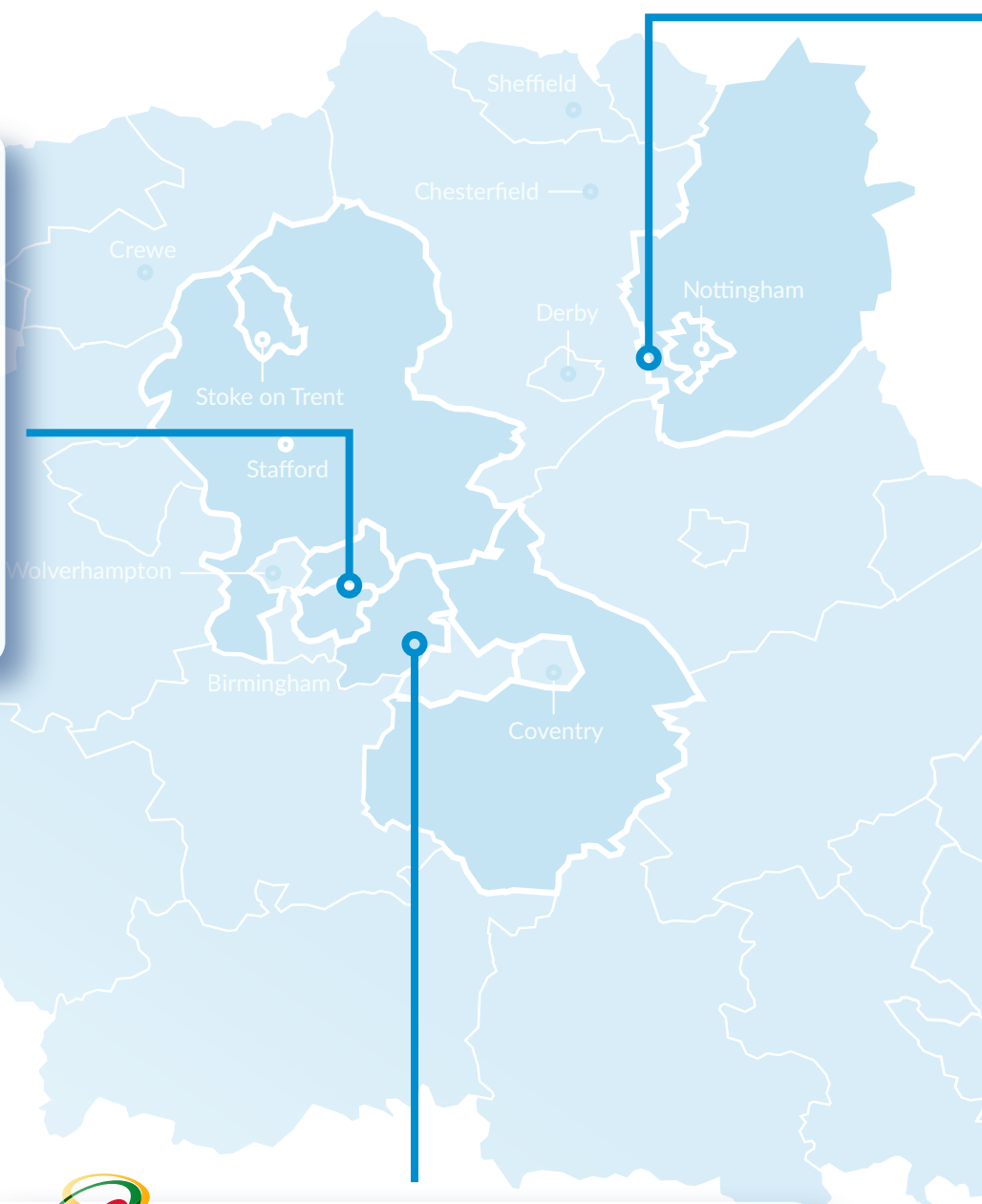


The Queen Elizabeth Academy

The Queen Elizabeth Academy

Atherstone, West Midlands

Work has now begun on the construction of permanent classrooms for additional students at TQEA. This £6.2M project, funded by Warwickshire County Council and delivered by the ATT Estates team, will be a welcome improvement for staff and students ahead of the next academic year. The new building is scheduled for handover in August 2026.



Bristnall Hall Academy

Bristnall Hall Academy

Oldbury, West Midlands

A group of talented students from BHA took to the stage at the prestigious Birmingham Rep Theatre as part of its annual Winter Festival last month. In preparation for the big day, the students were invited behind the scenes for a full technical rehearsal, explored the costume department and learned how lighting, sound and set design all come together to bring a production to life. Performing in a real theatre environment was an unforgettable experience, and the students displayed the Bristnall values of being adventurous, articulate, creative and proud.



ATT Further Education College

Sutton in Ashfield, Nottinghamshire

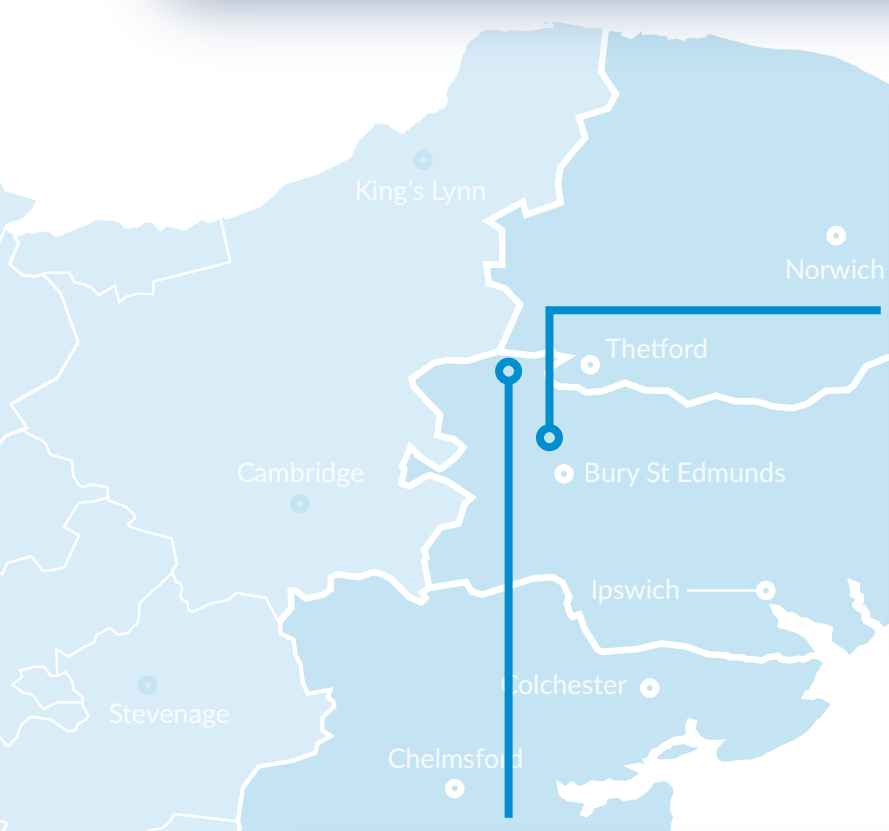


Last term, ATTFE College launched the *#InThisTogether* – *Stop the Bleed* campaign to equip communities with life-saving first aid skills. Starting in September 2025, their goal was to train 2,025 people in emergency response skills.

We're delighted to report that they've exceeded this target significantly with 3,259 learners of all ages having completed the training so far.

Through partnership work, ATTFE has raised £26,000 to date to purchase emergency Stop the Bleed kits for defibrillators across Nottinghamshire. Their goal is that by the end of 2026, every defibrillator in the county will include an ATTFE College branded kit.

This year, they are pleased to be looking at expanding this initiative to ATT academies across the country.



Mildenhall College
ACADEMY

Mildenhall College Academy

Mildenhall, Suffolk

Students from MCA spent time last month creating nativity scenes for a very special purpose. Their creations were brought to St Mary's Church in Mildenhall village where they were counted towards a new world record for the most nativity scenes in one place! The final count of 2,392 was made on 2 January, beating the previous record held by a church in Florida, and is currently being verified by Guinness World Records.



Iceni Primary Academy

Hockwold, Norfolk

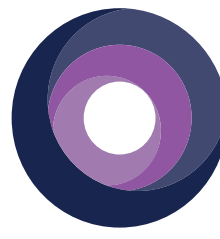
Last year, our Iceni Primary Academy was one of the first to be inspected under Ofsted's new inspection framework- with very positive outcomes. Now, they're excited to share their experience with other primaries at a free online event for school leaders.

The New Ofsted Framework: A Primary Experience will explore how visits have changed and what inspectors want to know. With insights into Early Years, Safeguarding and inclusion, Iceni's teachers and leaders will share what they did to plan and prepare for their inspection, and how our Trust supported them to evidence their practice.

[Click to Learn More
on our website](#)



Cornerstone Theatre: A Transformative Cultural Hub



SUTTON
COMMUNITY
ACADEMY

The newly refurbished Cornerstone Theatre at Sutton Community Academy is rapidly becoming one of the standout cultural assets within our Trust and the wider Ashfield community. Following an ambitious regeneration project, the theatre has been transformed into a state of the art, multifunctional performance and learning space, offering opportunities not only for students but for local residents and visitors across the district.

An extensive renovation has transformed an ageing facility is now a modern, future ready venue that boasts newly created dressing rooms and changing areas, multi use teaching spaces, specialist lighting and projection systems, as well as a redesigned auditorium that seats 200.

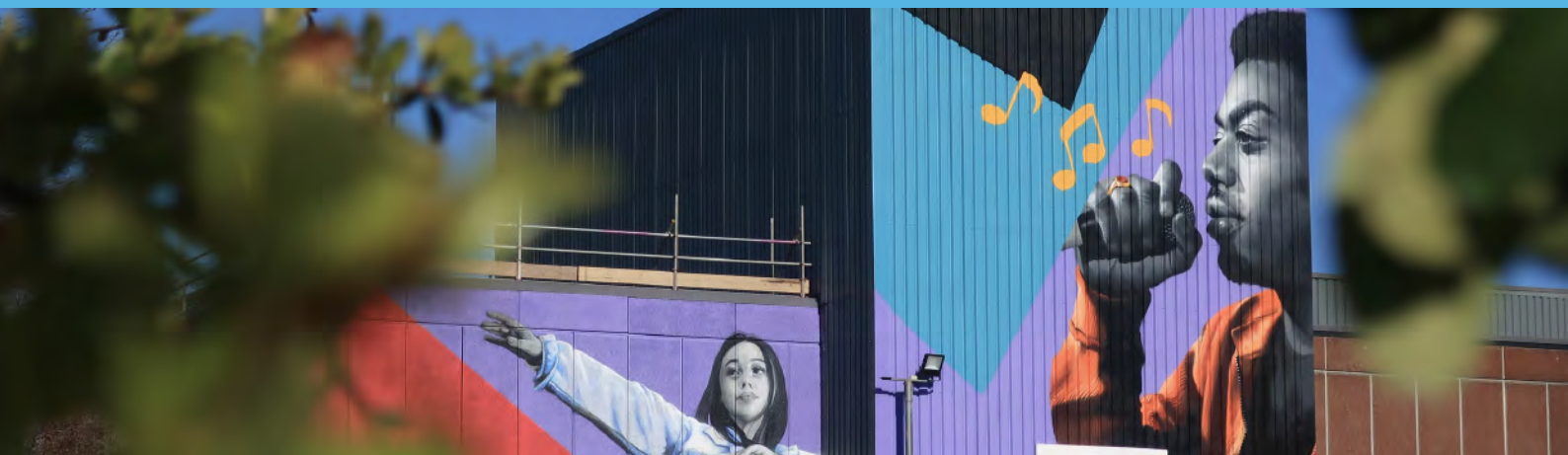
This major transformation was delivered through close collaboration between Sutton Community Academy, ATTFE College, Ashfield District Council, and refurbishment specialists Miller Knight. Their joint ambition was to create a facility that would serve as a vibrant, inclusive cultural centre, enriching lives through performance, creativity, and community use.

Ashfield District Council has championed the project from its early stages, securing funding through initiatives such as the Future High Streets Fund. Council leaders emphasise that the theatre now opens up new pathways for cultural engagement, particularly for communities that may not otherwise have access to professional arts venues.

This diversity of use is expected to boost the local night time economy and increase town centre footfall, all while nurturing a thriving arts culture in Sutton and surrounding areas.

The success and significance of the transformation have not gone unnoticed. Cornerstone Theatre has been shortlisted for “Refurbishment Project of the Year” at the prestigious EEM Building Communities Awards, a regional programme celebrating projects that deliver positive social, economic, and environmental impact.

This nomination recognises not just the physical improvements, but the long term value the theatre now provides; supporting education, widening cultural participation, and enhancing community life. Winners will be announced at the awards ceremony in March.

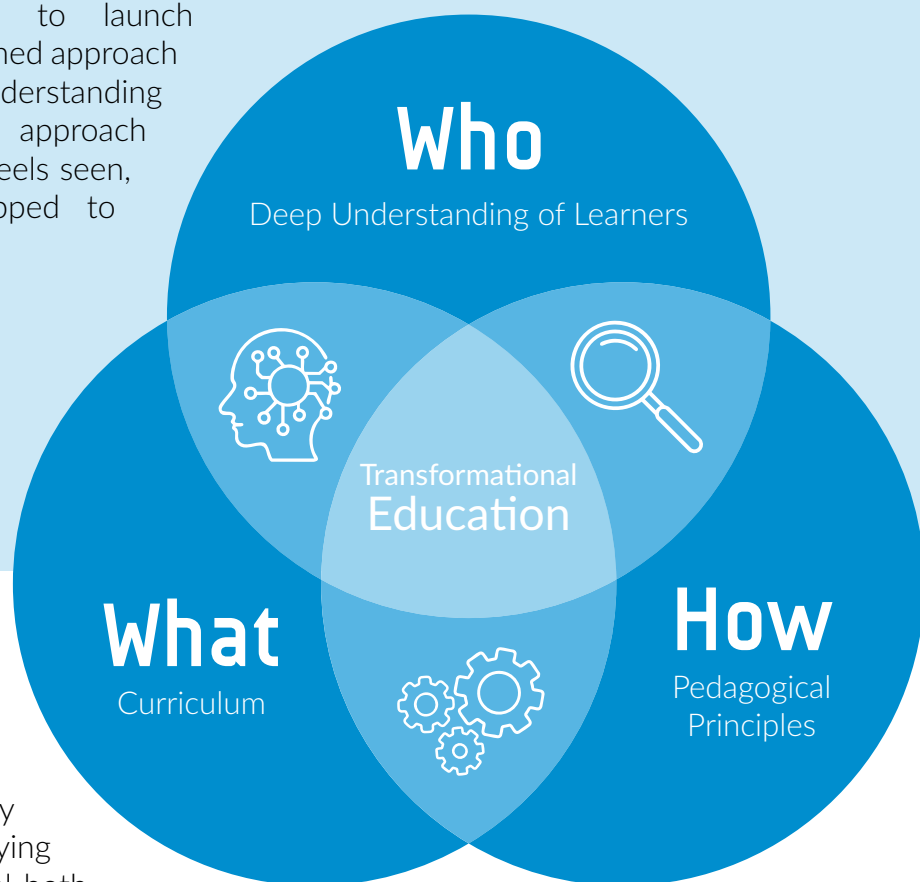


Spotlight: Transformational Education



Last term, we were pleased to launch Transformational Education, an aligned approach to pedagogy, curriculum, and understanding our learners. This three-strand approach allows us to ensure every learner feels seen, supported, stretched, and equipped to succeed with confidence.

Sitting behind Transformational Education is the key principle of adaptive practice- simply and importantly, effective practice for **all** learners.



The Who

Transformational Education recognises that teachers must possess a deep understanding of their learners, recognising that they learn at different rates, require varying levels of support, and need to feel both capable and confident in their learning.

The What

Transformational Education means that all pupils work towards common curriculum outcomes, while teachers tailor their support to ensure every learner makes meaningful progress, building the knowledge, skills, and self-belief to thrive.

The How

Transformational Education involves both thoughtful planning and agile responsiveness, drawing on our Pedagogical Principles to deliberately choose and skilfully apply effective teaching strategies, while continually reflecting on their impact to strengthen competence and enhance outcomes.

Rather than forming a set of rules, Transformational Education is the culmination of the work happening every day across our Trust. It illustrates how everyone in our organisation contributes to our shared goals, through interactions with pupils, classroom practice, and engagement with professional learning.

Learn More

Visit our website to learn more about Transformational Education and find out how we support our academies with safeguarding, inclusion, PD, operations, and more.

[Click here to learn more.](#)



 academytransformationtrust.co.uk

 office@attrust.org.uk

 [@academytrust.bsky.social](https://academytrust.bsky.social)

 Academy Transformation Trust

 [@AcademyTransformationTrust](https://www.instagram.com/AcademyTransformationTrust)

 [@AcademyTrust](https://twitter.com/AcademyTrust)

#TransformingLives